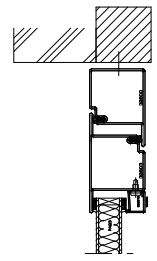


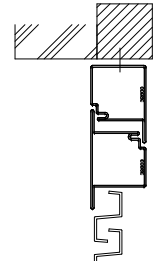
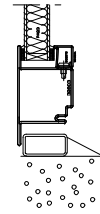
1

Detail opbouw rooster type HS27 (schijn/ ventilatierooster)
(WK2-3, 60-120 minuten WBDBO) gecertificeerd!
Forster Presto serie (kozijn met flens)



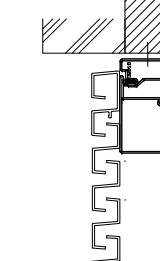
2

Detail inbouw sandwichpaneel
(WK2-3, 60-120 minuten WBDBO)
gecertificeerd!
Forster Presto serie (kozijn zonder flens)



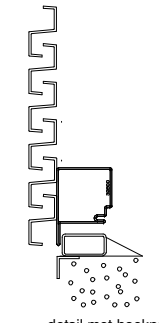
3

Detail inbouw HS27 geventileerd
Forster Presto serie (kozijn zonder flens)

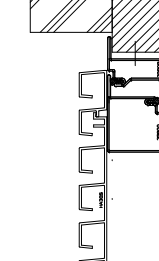


4

Detail opbouw HS27 geventileerd
Forster Presto serie (kozijn zonder flens)

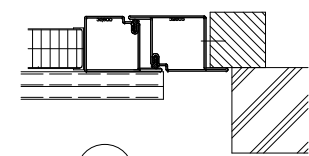


detail met hoekprofiel
aan de onderzijde

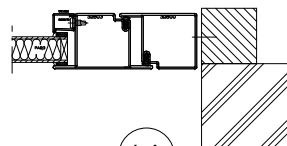


5

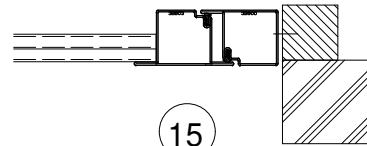
Detail opbouw HA27 Schijnrooster
Forster Presto serie (kozijn met flens)



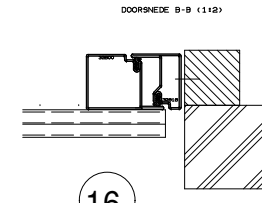
13



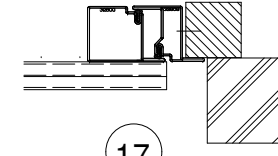
14



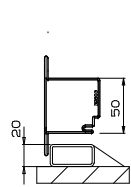
15



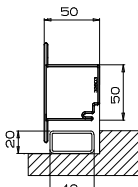
16



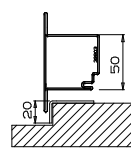
17



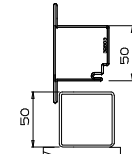
18



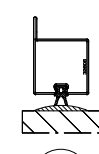
19



20

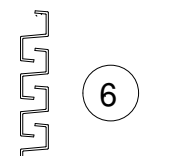
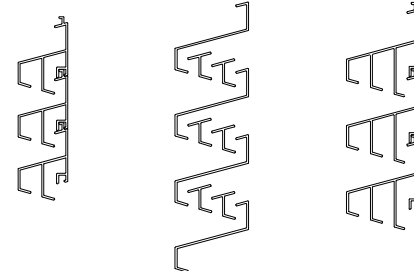


21



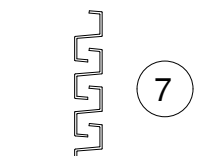
22

mogelijkheden onderdorpels (detail 22 is niet toegestaan voor trafodeuren!)



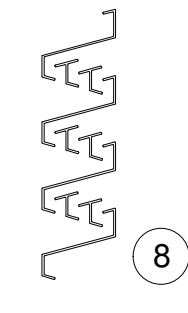
6

Ventilatierooster type HS27 opbouw



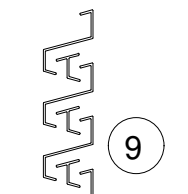
7

Ventilatierooster type HS27 inbouw



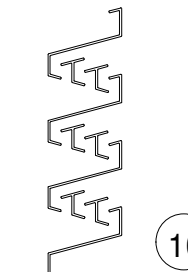
8

Ventilatierooster type HS50 opbouw



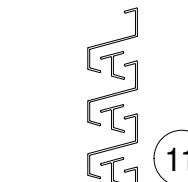
9

Ventilatierooster type HS42 opbouw



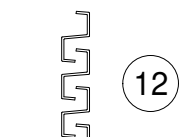
10

Ventilatierooster type HS50 inbouw



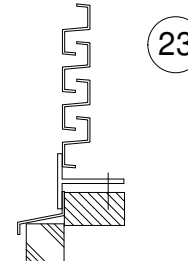
11

Ventilatierooster type HS42 inbouw



12

Principedetail zijzicht pui/ rooster



23

Principedetail onderzijde rooster